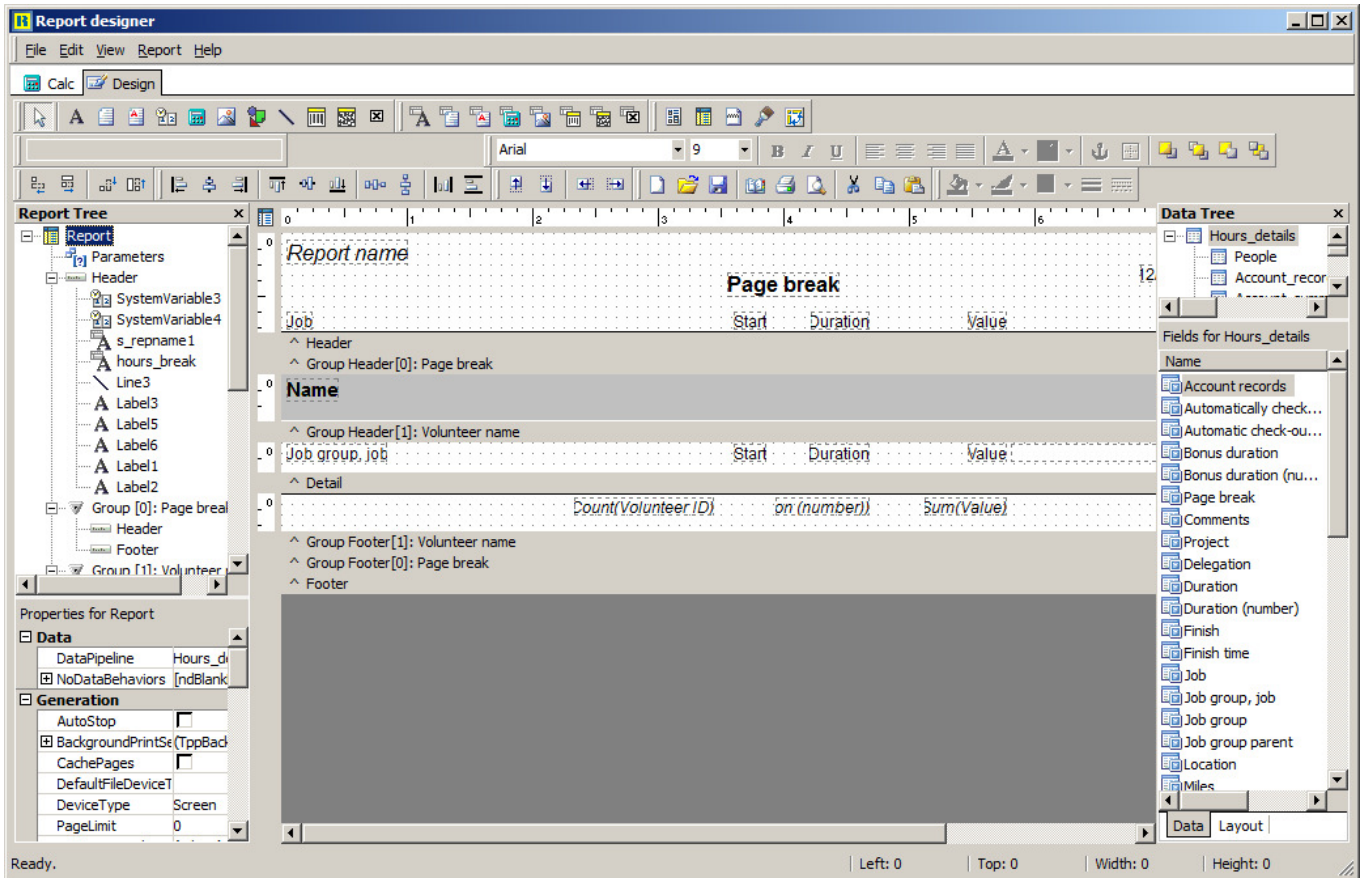


Report Designer Webinar – screenshots for notetaking

Hours details by volunteer-



Hours details by volunteer

Page 1 of 39
11/12/2012 09:11AM

Job	Start	Duration	Value	Location
Chevrette, Michael R				Person type: Volunteer Group: Bespoke Software
Coffee Shop, Coffee Cove	05/28/2010 01:16PM	0:18	\$3	General
Coffee Shop, Coffee Cove	05/29/2010 09:00AM	9:00		General
Coffee Shop, Coffee Cove	05/30/2010 09:00AM	9:00		General
Coffee Shop, Coffee Cove	05/31/2010 09:00AM	9:00		General
Coffee Shop, Coffee Cove	06/01/2010 09:00AM	9:00	\$90	General
Coffee Shop, Coffee Cove	06/02/2010 09:00AM	9:00	\$90	General
Coffee Shop, Coffee Cove	06/03/2010 09:00AM	9:00	\$90	General
Coffee Shop, Coffee Cove	06/04/2010 09:00AM	9:00	\$90	General
Coffee Shop, Coffee Cove	06/05/2010 09:00AM	9:00	\$90	General
Coffee Shop, Coffee Cove	06/06/2010 09:00AM	9:00	\$90	General
Coffee Shop, Coffee Cove	06/07/2010 09:00AM	9:00	\$90	General
Coffee Shop, Coffee Cove	06/08/2010 09:00AM	9:00	\$90	General

People report -

The screenshot shows the 'Report designer' application window. The main area displays a report layout with a header section containing 'Report name' and a 'Page break' indicator. Below the header is a table with columns for 'Name', 'Gender', 'DOB', 'Wheelchair/requires', 'Person type', and 'Active status'. The table is currently empty. The interface includes a 'Report Tree' on the left, a 'Data Tree' on the right, and a 'Properties for Report' pane at the bottom left. The status bar at the bottom indicates 'Ready' and provides coordinates for the report area.

<i>People</i>		Page 1 of 1	
		11/09/2012 10:33AM	
Chevrette, Michael R		Volunteer	Active
Male	01/15/1974		Bespoke Software
Court mandated	Language: English	Safe Kids, Emergency Prep, Non Exempt - daily	
543 Maple st	Green: Unrestricted	Expires: 03/06/2015	
			